



LAPORAN

MOBILITAS DI PELABUHAN GILIMANUK



Negara, 14 Juni 2024



ARUS KELUAR MASUK KENDARAAN & ORANG DI PELABUHAN GILIMANUK

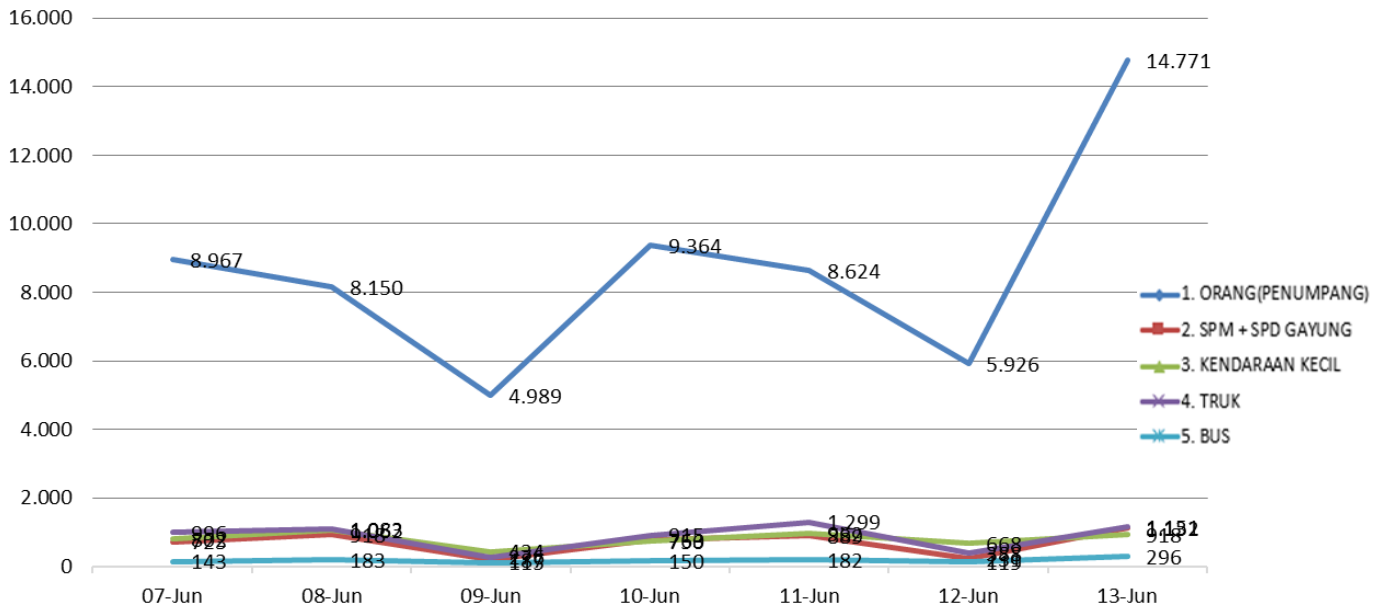


s.d. 14 Juni 2024 Pukul 08.00 Wita

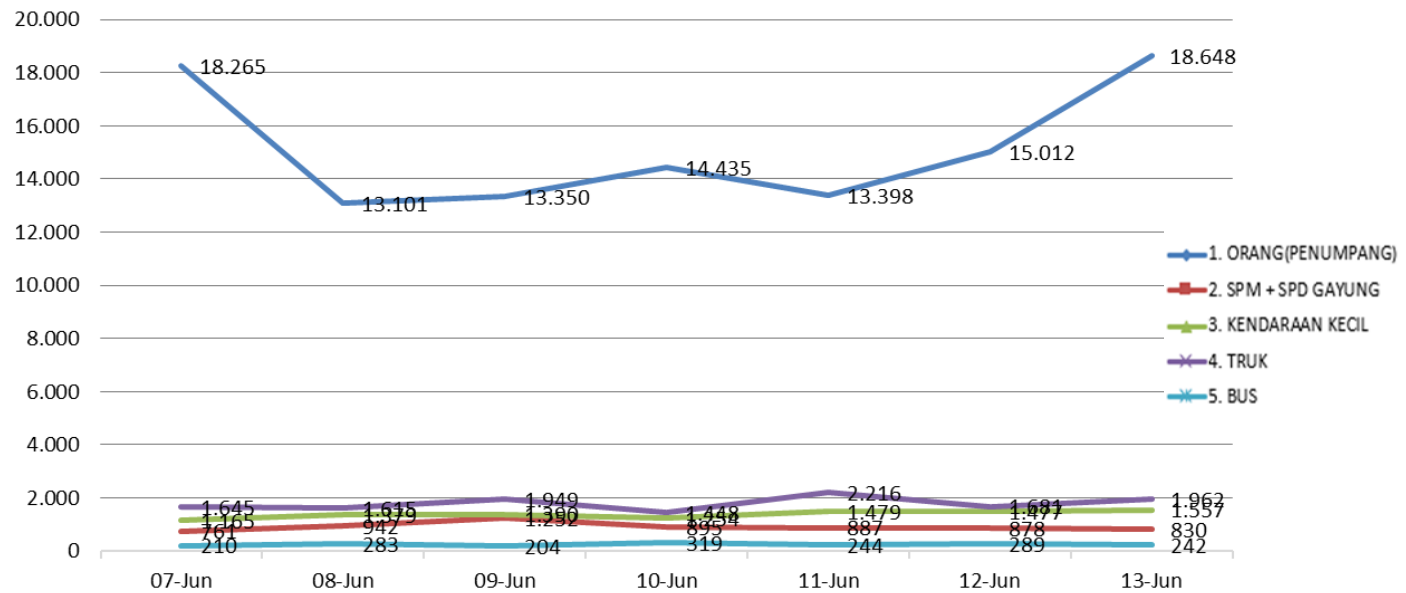
| NO | URAIAN | TGL | | | | | | | JML |
|-----------|-----------------------------|--------------|--------------|--------------|--------------|--------------|--------------|--------------|----------------|
| | | 07-Jun | 08-Jun | 09-Jun | 10-Jun | 11-Jun | 12-Jun | 13-Jun | |
| I | KEBERANGKATAN/KELUAR | | | | | | | | |
| | 3. ORANG(PENUMPANG) | 8.967 | 8.150 | 4.989 | 9.364 | 8.624 | 5.926 | 14.771 | 60.791 |
| | 4. SPM + SPD GAYUNG | 723 | 918 | 187 | 763 | 889 | 231 | 1.132 | 4.843 |
| | 5. KENDARAAN KECIL | 802 | 1.062 | 434 | 750 | 962 | 668 | 918 | 5.596 |
| | 6. TRUK | 996 | 1.083 | 276 | 915 | 1.299 | 388 | 1.151 | 6.108 |
| | 7. BUS | 143 | 183 | 115 | 150 | 182 | 119 | 296 | 1.188 |
| | JUMLAH KENDARAAN | 2.664 | 3.246 | 1.012 | 2.578 | 3.332 | 1.406 | 3.497 | 17.735 |
| II | KEDATANGAN/MASUK | | | | | | | | |
| | 3. ORANG(PENUMPANG) | 18.265 | 13.101 | 13.350 | 14.435 | 13.398 | 15.012 | 18.648 | 106.209 |
| | 4. SPM + SPD GAYUNG | 761 | 942 | 1.252 | 895 | 887 | 878 | 830 | 6.445 |
| | 5. KENDARAAN KECIL | 1.165 | 1.379 | 1.390 | 1.254 | 1.479 | 1.477 | 1.557 | 9.701 |
| | 6. TRUK | 1.645 | 1.615 | 1.949 | 1.448 | 2.216 | 1.681 | 1.962 | 12.516 |
| | 7. BUS | 210 | 283 | 204 | 319 | 244 | 289 | 242 | 1.791 |
| | JUMLAH KENDARAAN | 3.781 | 4.219 | 4.795 | 3.916 | 4.826 | 4.325 | 4.591 | 30.453 |



GRAFIK MOBILITAS KELUAR BALI



GRAFIK MOBILITAS MASUK BALI





**SEKIAN &
TERIMA KASIH**

